

AJAX Swing Arm Pallet Gates for all-round edge protection



AJAX Safe Access Systems: Protecting your workers in hazardous and high level environments.

The AJAX Swing Arm Pallet Gate is a heavy construction recommended for larger loads and suitable for all loading or unloading of pallets from various height openings.

Technical Specification

All Units are manufactured and constructed to the highest quality for long lasting durability and many years of maintenance free operation in harsh environments.

Weld mesh can be added to the gates to prevent loose items falling with the option of wear plates to provide improved durability of the load area.

Standard finishes are powder coated yellow to BS 08E51 and galvanised to BS 729. Other finishes are available on request.

Standard Swing Arm Pallet Gates

The standard Swing Arm Pallet Gates are counterbalance manually operated but has the option of pneumatics on both models, meaning the gate can be operated from the lower level.



Model	Width (mm)	Depth (mm)	Height (mm)	Powder Coated	Galvanised
Single	1200	1200	1800	Yes	Yes
Double	2400	1200	1800	Yes	Yes

Swing Arm Pallet Gate Installation

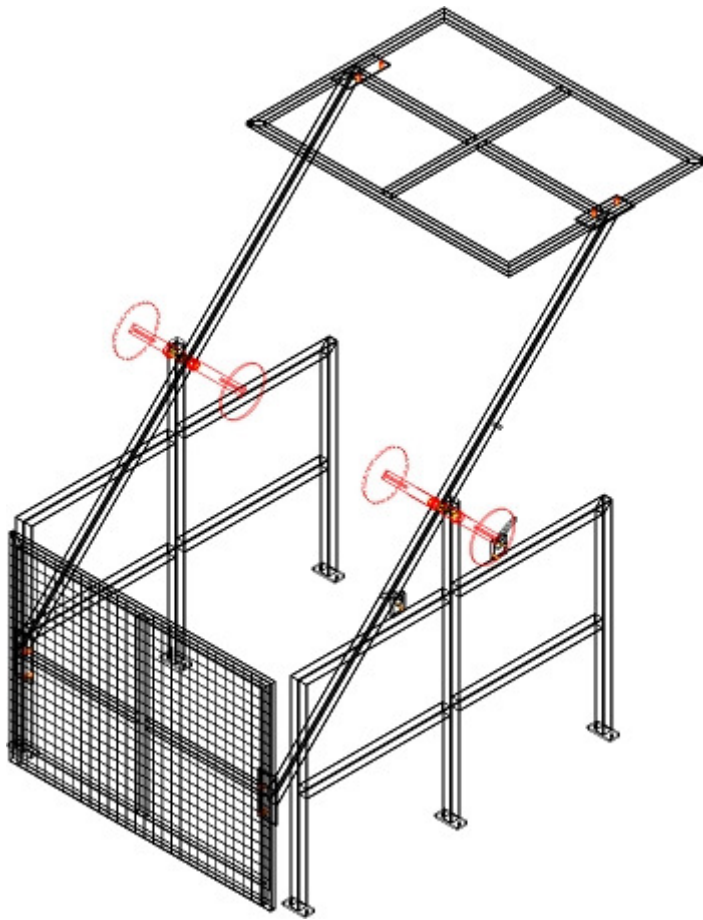
Canal Engineering offer supply only or full installation and commissioning: Supply only units come with full installation instructions.

Canal Engineering also offer on-going staff training and instruction as well as annual inspection and maintenance contracts.

AJAX Safe Access Systems:

Pallet gates and barriers, tanker access steps and platforms; engineered for reliability, simple operation and outstanding value. Full technical data sheets for standard AJAX Safe Access products are available to download from our website at www.ajax.eu.com.

AJAX Swing Arm Pallet Gates for all-round edge protection



Optional Extras

As the UK based designer and manufacturer of all AJAX Safe Access Systems, Canal Engineering is able to offer customisation of any of its units:

- **Pneumatics**

Pneumatics allows the gate to be operated from the lower level.

- **Wear Plates**

To improve the durability of the load area e.g. protecting a timber floor.

- **Weld Mesh**

Safety weld mesh can be added to the gates to prevent the falling of objects out of the barrier.

- **Stainless Steel**

Can be manufactured from stainless steel for high care hygienic or heavily corrosive environments.

For advice regarding the most suitable product for you please contact our Safe Access expert today to discuss your bespoke requirements.

AJAX | By Canal Engineering Limited

AJAX safe access systems is a division of Canal Engineering Limited. Canal Engineering is based in Nottingham and specialise in the design, fabrication, manufacture and installation of metalwork engineering projects.

Visit www.canalengineering.co.uk.

AJAX Roll Over Pallet Gates for all-round edge protection

AJAX Safe Access Systems: Protecting your workers in hazardous and high level environments.

The AJAX Roll Over Pallet Gate is our most popular model. Durable and easy to operate, the design mean the gate only uses half the space of the load in its closed position.

Technical Specification

All Units are manufactured and constructed to the highest quality for long lasting durability and many years of maintenance free operation in harsh environments.

Units are manufactured from mild steel

Hinged bottom section will reduce the arc of the barrier where insufficient headroom is a problem.

Standard finishes are powder coated yellow to BS 08E51 and galvanised to BS 729. Other finishes are available on request.

Standard Roll Over Pallet Gates

The standard Roll Over Pallet Gate is spring assisted and manually operated.



Model	Width (mm)	Depth (mm)	Height (mm)	Powder Coated	Galvanised
Single	1200	1200	1800	Yes	Yes
Double	2400	1200	1800	Yes	Yes

Roll Over Pallet Gate Installation

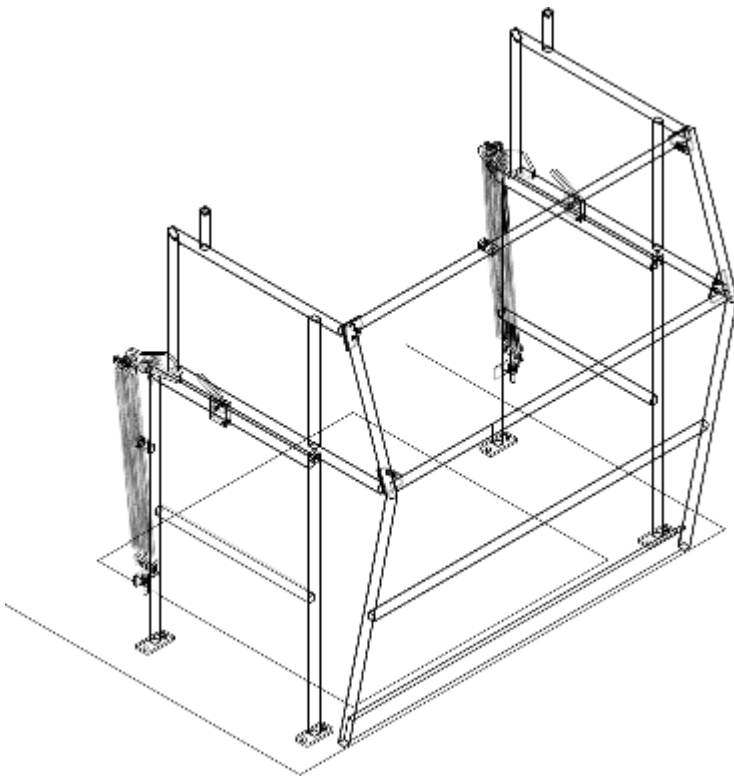
Canal Engineering offer supply only or full installation and commissioning: Supply only units come with full installation instructions.

Canal Engineering also offer on-going staff training and instruction as well as annual inspection and maintenance contracts.

AJAX Safe Access Systems:

Pallet gates and barriers, tanker access steps and platforms; engineered for reliability, simple operation and outstanding value. Full technical data sheets for standard AJAX Safe Access products are available to download from our website at www.ajax.eu.com.

AJAX Roll Over Pallet Gates for all-round edge protection



Optional Extras

As the UK based designer and manufacturer of all AJAX Safe Access Systems, Canal Engineering is able to offer customisation of any of its units:

- **Folding Sides**

Unit can come with folding sides so the barrier can be stored flat when not in use.

- **Wear Plates**

To improve the durability of the load area e.g. protecting a timber floor.

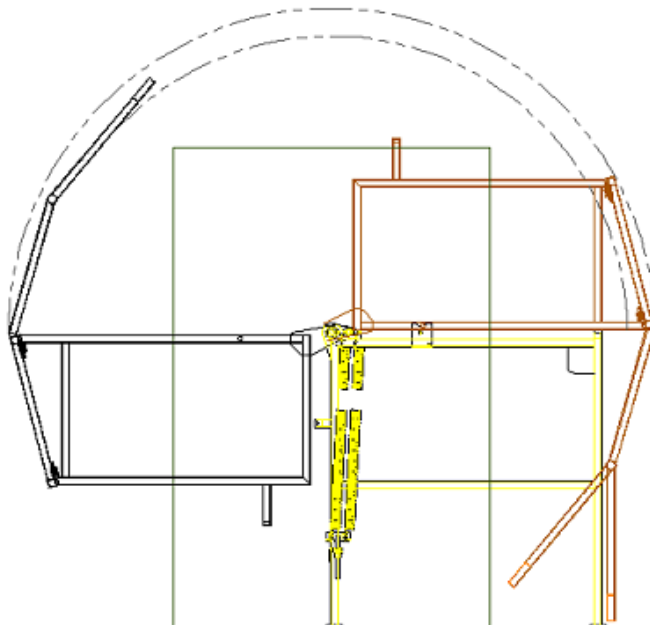
- **Weld Mesh**

Safety weld mesh can be added to the gates to prevent the falling of objects out of the barrier.

- **Stainless Steel**

Can be manufactured from stainless steel for high care hygienic or heavily corrosive environments.

For advice regarding the most suitable product for you please contact our Safe Access expert today to discuss your bespoke requirements.



AJAX | By Canal Engineering Limited

AJAX safe access systems is a division of Canal Engineering Limited. Canal Engineering is based in Nottingham and specialise in the design, fabrication, manufacture and installation of metalwork engineering projects.

Visit www.canalengineering.co.uk.

AJAX Righthite Pneumatic Step Unit for top loading tanker access



AJAX Safe Access Systems: Protecting your workers in hazardous and high level environments.

The AJAX Righthite Pneumatic Step Unit is suitable for all rail and road tanker loading and is available in a range of standard sizes to suit many variations in tanker height.

Technical Specification

All Units are manufactured and constructed to the highest quality for long lasting durability and many years of maintenance free operation in harsh environments.

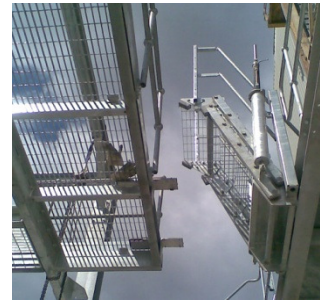
Robust hot dipped galvanised construction for long lasting durability in harsh external environments.

All units comply with ATEX 95 equipment directive 94/9/EC this concerns the supply and use of equipment in potential explosive atmospheres.

Fitted with a hydraulic parking lock as standard, and can be locked off and used at any position.

Pneumatic cylinders mounted to each spring boxes to allow easy operation using the built in control panel. Units require a compressed air supply of 5.5 barg; air consumption is 80 litres per cycle.

Pneumatics are ideal for larger Step Units especially those fitted with a cage.



Model Number	Drop (mm)	Reach (mm)	Number of steps
Mk. 2	481	685	2
Mk. 3	677	919	3
Mk. 4	874	1152	4
Mk. 5	1070	1386	5
Mk. 6	1280	1619	6
Mk. 7	1490	1853	7

Step Unit Installation

Canal Engineering offer supply only or full installation and commissioning: Supply only units come with full installation instructions.

Canal Engineering also offer on-going staff training and instruction as well as annual inspection and maintenance contracts.

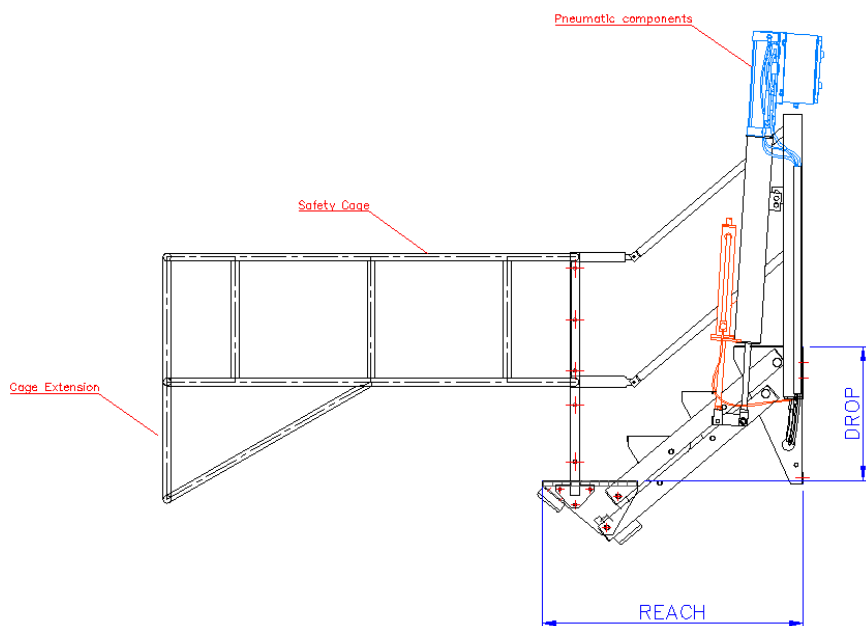
AJAX Safe Access Systems:

Tanker access steps and platforms, pallet gates and barriers; engineered for reliability, simple operation and outstanding value. Full technical data sheets for standard AJAX Safe Access products are available to download from our website at www.ajax.eu.com.

AJAX Righthite Pneumatic Step Unit for top loading tanker access



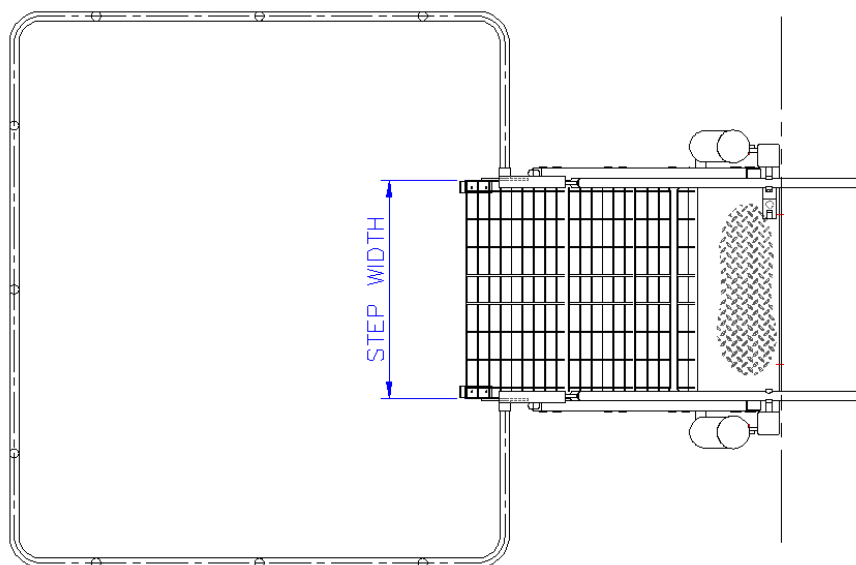
SAFE ACCESS



Optional Extras

As the UK based designer and manufacturer of all AJAX Safe Access Systems, Canal Engineering is able to offer customisation of any of its Units:

- **Safety Cage**
These are required if there is no means of guarding once the operator is on the tanker.
- **Cage Extension**
Cages can be supplied with additional extended parts if required to minimise the risk of fall.
- **Fail Safe System**
Integrated fail safe systems are there to prevent movement of vehicles when the units are in use.



For advice regarding the most suitable Unit for you please contact our Safe Access expert today to discuss your bespoke requirements.

AJAX | By Canal Engineering Limited

AJAX Safe Access Systems is a division of Canal Engineering Limited. Canal Engineering is based in Nottingham and specialise in the design, fabrication, manufacture and installation of metalwork engineering projects.

Visit www.canalengineering.co.uk.

The blue measurements indicate the variable dimensions in the standard range of AJAX Righthite Pneumatic Step Units. All Pneumatic Step Units are fitted with steel treads and are available in four standard widths: 800mm; 1000mm; 1200mm; 1500mm.



AJAX Righthite Mobile Step Unit for top loading tanker access



AJAX Safe Access Systems: Protecting your workers in hazardous and high level environments.

The AJAX Righthite Mobile Step Unit is light weight designed for tanker loading areas where floor space is considered to at a premium.

Technical Specification

All Units are manufactured and constructed to the highest quality for long lasting durability and many years of maintenance free operation in harsh environments.

Constructed from aluminium and mild steel; which combined gives structural strength, flexibility and manoeuvrability.

The height can be adjusted by a mechanical hand winch. Once in position and secured, safe access to the vehicle is achieved for the operator.

Supplied with stabilisers and rubber locking wheels for optimum stabilisation.

Standard Step Unit Range

The standard range of Mobile Step Units is supplied with safety rails, non-slip rungs, and a full wrap around cage for working at height safety.

Mobile Step Unit Dimensions

AJAX is able to accommodate to all types of tankers and high level maintenance platforms. The Step Units are available on request to suit the unique dimensions required.

Step Unit Inspection and Maintenance

Canal Engineering also offer on-going staff training and instruction as well as annual inspection and maintenance contracts.



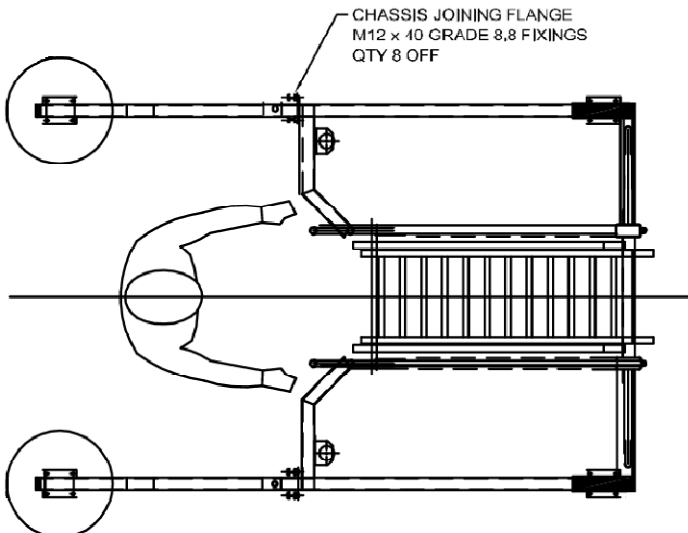
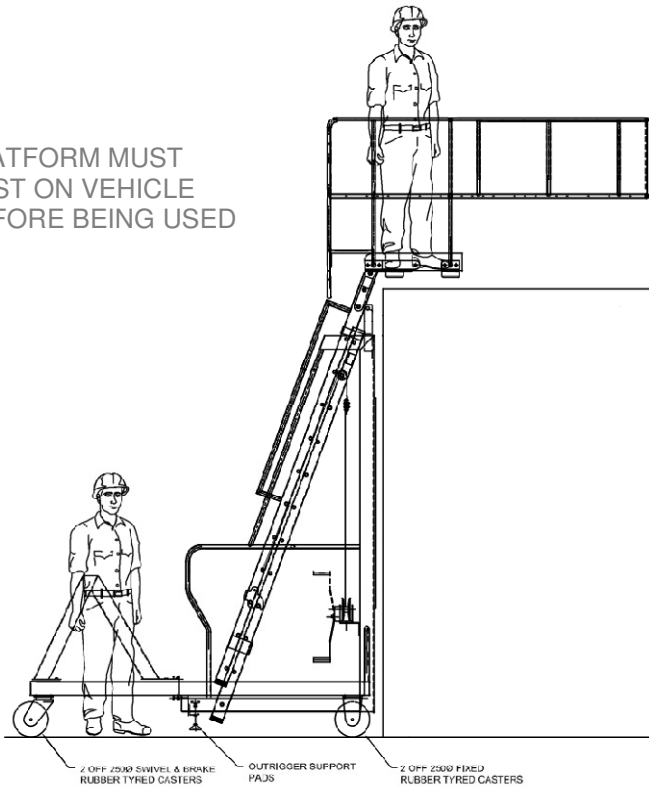
AJAX Safe Access Systems:

Tanker access steps and platforms, pallet gates and barriers; engineered for reliability, simple operation and outstanding value. Full technical data sheets for standard AJAX Safe Access products are available to download from our website at www.ajax.eu.com.

AJAX Righthite Mobile Step Unit for top loading tanker access



PLATFORM MUST REST ON VEHICLE BEFORE BEING USED



Optional Extras

As the UK based designer and manufacturer of all AJAX Safe Access Systems, Canal Engineering is able to offer customisation of any of its units:

- Safety Cage.
To protect an operator once on the tanker a safety cage is used if there is no other means of guarding.
- Pneumatic Tyres
Can be supplied with pneumatic tyres for dealing with rough and uneven surfaces, indoors and outdoors.

For advice regarding the most suitable Unit for you please contact our Safe Access expert today to discuss your bespoke requirements.

AJAX | By Canal Engineering Limited

AJAX safe access systems is a division of Canal Engineering Limited. Canal Engineering is based in Nottingham and specialise in the design, fabrication, manufacture and installation of metalwork engineering projects.

Visit www.canalengineering.co.uk.



AJAX Righthite Manual Step Unit for top loading tanker access



AJAX Safe Access Systems: Protecting your workers in hazardous and high level environments.

The AJAX Righthite Manual Step Unit is suitable for all rail and road tanker loading and is available in a range of standard sizes to suit many variations in tanker height.

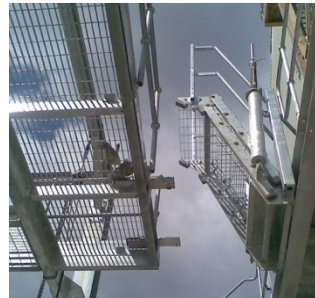
Technical Specification

All Units are manufactured and constructed to the highest quality for long lasting durability and many years of maintenance free operation in harsh environments.

Robust hot dipped galvanised construction for long lasting durability in harsh external environments.

All units comply with ATEX 95 equipment directive 94/9/EC; this concerns the supply and use of equipment in potentially explosive atmospheres.

Supplied with a foot operated lock to lock the unit in its up position.



Standard Step Unit Range

The standard range of Manual Step Units is supplied with either galvanised steel or aluminium treads to comply with manual handling weight legislation.

- Supplied with galvanised steel steps
- Supplied with aluminium steps or pneumatically operated.
- Available as pneumatically operated Unit.

Model Number	Drop	Reach	Number of steps	Step width 800mm	Step width 1000mm	Step width 1200mm	Step width 1500mm
Mark 2	481mm	685mm	2				
Mark 3	677mm	919mm	3				
Mark 4	874mm	1152mm	4				
Mark 5	1070mm	1386mm	5				
Mark 6	1280mm	1619mm	6				
Mark 7	1490mm	1853mm	7				

Step Unit Installation

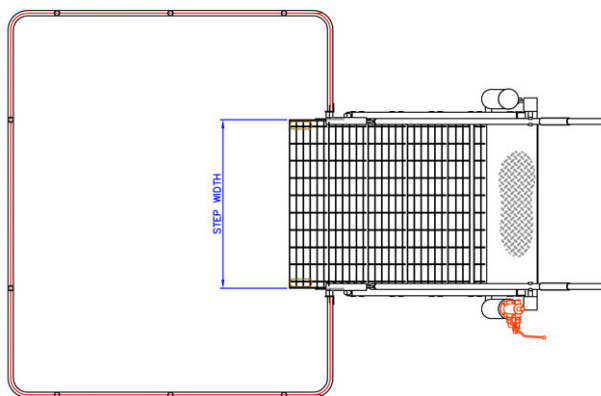
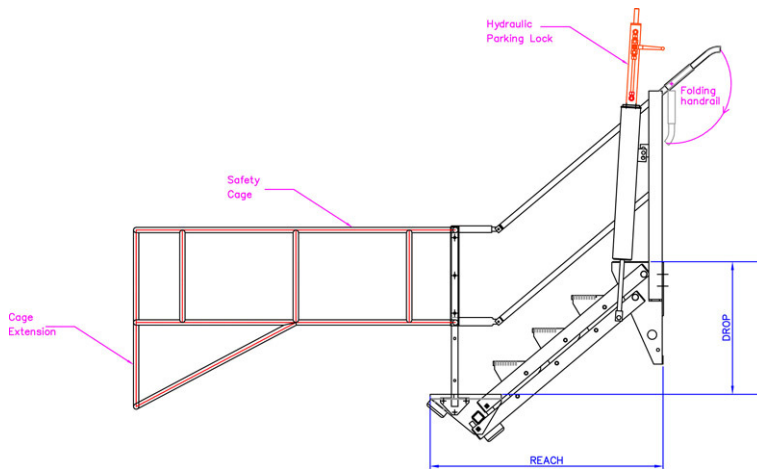
Canal Engineering offer supply only or full installation and commissioning; Supply only units come with full installation instructions.

Canal Engineering also offer on-going staff training and instruction as well as annual inspection and maintenance contracts.

AJAX Safe Access Systems:

Tanker access steps and platforms, pallet gates and barriers; engineered for reliability, simple operation and outstanding value. Full technical data sheets for standard AJAX Safe Access products are available to download from our website at www.ajax.eu.com.

AJAX Righthite Manual Step Unit for top loading tanker access



The blue measurements indicate the variable dimensions in the standard range of AJAX Righthite Manual Step Units.

Optional extras

As the UK based designer and manufacturer of all AJAX Safe Access Systems, Canal Engineering is able to offer customisation of any of its Units:

- **Safety Cage**
These are required if there is no means of guarding once the operator is on the tanker.
- **Cage Extension**
Cages can be supplied with additional extended parts if required to minimise the risk of fall.
- **Fail Safe System**
Integrated fail safe systems are there to prevent movement of vehicles when the units are in use.
- **Folding Handles**
If Units are attached to a narrow platform, folding handles maintain unrestricted access to its full width.
- **Hydraulic Parking Lock**
To avoid the Unit resting on the tanker, a hydraulic parking lock locks and stabilises the Unit in any position. Where fitted the standard foot lock is no longer required.

For advice regarding the most suitable Unit for you please contact our Safe Access expert today to discuss your bespoke requirements.

AJAX | By Canal Engineering Limited

AJAX safe access systems is a division of Canal Engineering Limited. Canal Engineering is based in Nottingham and specialise in the design, fabrication, manufacture and installation of metalwork engineering projects.

Visit www.canalengineering.co.uk.



AJAX Droprite Bridging Platform for easy loading of goods

AJAX Safe Access Systems: Protecting your workers in hazardous and high level environments.

The AJAX Safe Access Platform is used extensively in warehouse loading docks and in distribution centres as they facilitate easy loading of goods.

Technical Specification

All Units are manufactured and constructed to the highest quality for long lasting durability and many years of maintenance free operation in harsh environments.

The platform body is hot dipped galvanised after manufacture and the decking is aluminium tread plated.

All platforms have a spring assisted operation and can have fixed or folding side rails.

Standard Safe Access Platform

The standard Safe Access Platform are manufactured and fabricated to enable for loading and unloading vehicles with varying height load beds.



Width (mm)	Length (mm)	Spring Assisted	Fixed Rails	Folding Rails
900	On Request	Yes	Yes	Yes

Platform Installation

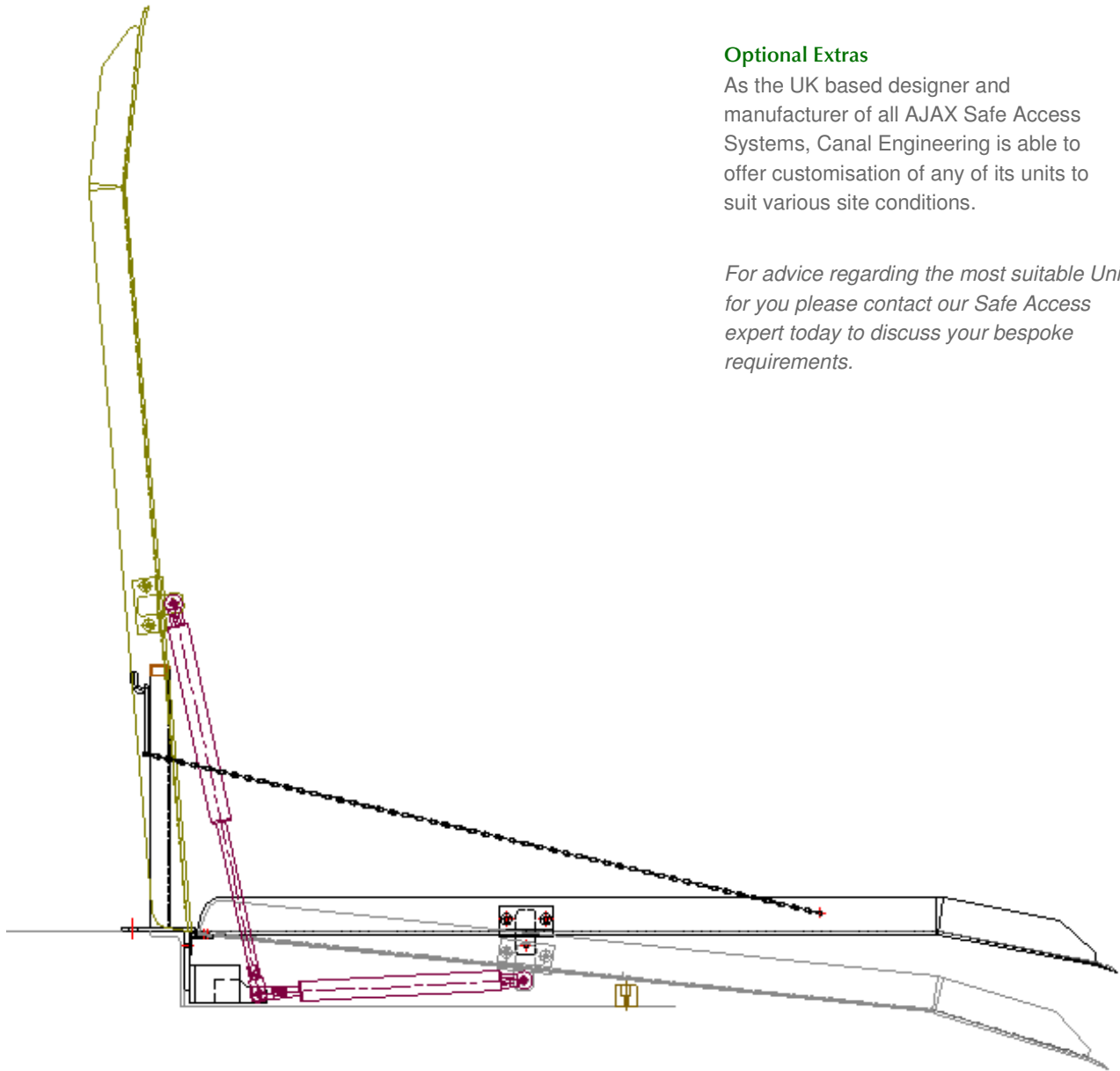
Canal Engineering offer supply only or full installation and commissioning: Supply only units come with full installation instructions.

Canal Engineering also offer on-going staff training and instruction as well as annual inspection and maintenance contracts.

AJAX Safe Access Systems:

Platforms, tanker access steps, pallet gates and barriers; engineered for reliability, simple operation and outstanding value. Full technical data sheets for standard AJAX Safe Access products are available to download from our website at www.ajax.eu.com.

AJAX Droprite Bridging Platforms for easy loading of goods



Optional Extras

As the UK based designer and manufacturer of all AJAX Safe Access Systems, Canal Engineering is able to offer customisation of any of its units to suit various site conditions.

For advice regarding the most suitable Unit for you please contact our Safe Access expert today to discuss your bespoke requirements.

AJAX | By Canal Engineering Limited

AJAX Safe Access Systems is a division of Canal Engineering Limited. Canal Engineering is based in Nottingham and specialise in the design, fabrication, manufacture and installation of metalwork engineering projects.

Visit www.canalengineering.co.uk.

